



Company Profile

Shimmer Computerized Dental Technology Co., Ltd, a wholly owned subsidiary of Shenzhen Jiahong Dental Co, Ltd., is a full service top-tier dental lab since 2009. Shimmer owned over 25,000 square meters of intelligent industrial park with nearly 1,200 employees. We keep pace with global trends in dental digital technology, introducing cutting-edge equipment and applying frontier technologies.

We are a full-service dental lab, offering zirconia all-ceramic series, veneers, implant series, removable, orthodontics and more. Our service network covered worldwide in North America, Europe, including France, Germany, Netherlands, Sweden, Denmark Norway, etc.

In clinical practices, dentists and dental technicians forged a deep and intimate partnership. We are like the left hand and the right hand, each possessing unique professional skills and knowledge, working together to provide the patients the best possible prosthesis treatment plans. This collaboration is not just a technical exchange, but a spiritual understanding and trust.

As a leading dental prosthesis provider, Shimmer always puts patients' needs and satisfaction at the forefront. We constantly innovate and improve, introducing advanced materials and technologies to provide patients high-quality treatment and restoration services. We understand that every success is built on your trust and support. It is because of your companionship that our group has grown from a small workshop with only 3 employees to a renowned enterprise with nearly 1,800 employees.

In the future, we will continue to uphold "Customer-centered, Quality oriented" philosophy continuously enhancing our quality and professional standards, working together to bring the smiles to the world.



CONTENTS



A



Fixed restorations

- 05 Full zirconia
- 05 Full multi-layered zirconia (Esthetic)
- 05 Full glass-ceramic
- 06 E-max
- 06 Porcelain Fused to Precious Metal
- 06 Porcelain Fused to non-precious Metal



Implant restoration

- 07 Custom abutment w/ screws
- 08 All-on-X Zirconia over ceramic bridge prosthesis
- 09 All-on-X Zirconia over Titanium implant
- 10 Implant Supported bar over denture

B



C



Removable restorations

- 11 Removable PEEK
- 12 Removable partial
 - Acrylic partial
 - Flipper
 - Flexible
- 13-14 Removable framework
- 15 Digital denture



Orthodontics

16-20

SHIMMER

under Jiahong Group

2009

Shimmer
become part of Jiahong Group

1995

Jiahong Group established since
1995 from 3 people dental studio

2015

National Equities Exchange and Quotations
Listed company National Hi-Tech Enterprise
Number of employees: 1200+

2019

Opened Huazhi Medical
Distributor of the dental materials

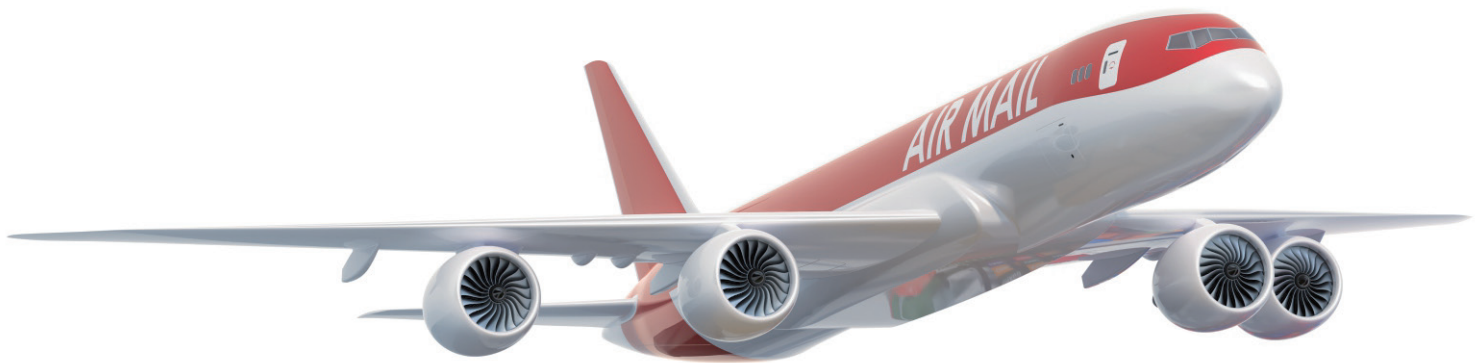
2016

Beijing Chaoer
Become part of Jiahong Group

2020- NOW

Open Hangzhou & Chengdu Jiahong offices
Total number of employees of Jiahong Group : ~1800





Logistics Option

UPS

Fedex

DHL

Lufthansa

Linex

Value-added Services

After years of business, we can understand exactly what our customers need as a dental laboratory. You can feel free to contact us at any time. In order to serve our customers better, we keep on doing the following things:



Assuring stable qualified products

Investing in state-to-art technology

Sharing our experience and resource



Fixed restorations



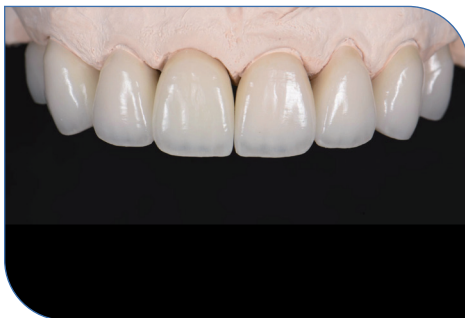
Full Zirconia

Technical Parameters (raw materials)

- Strength: 750-800MPa
- Transparency: 49%
- Hardness: 1250HV10

Indications:

- Single crown
- Bridges
- Full arch bridges



3D multi-layer Zirconia

Strength

The intensity of Multilayer-3D series, sintered strength self-cut by the end of 600 MPa and increase gradually. The maximum flexural strength is greater than 900MPa.

Indications:

Anterior coping, anterior single crown, anterior ≤ 3 units bridge, inlay, only, veneer, post core



Glass ceramic

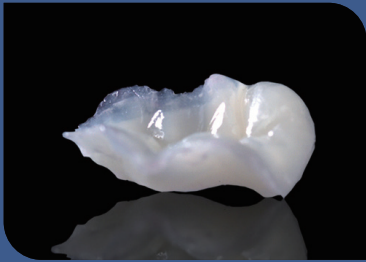
Technical Parameters (raw materials)

- Biaxial bending strength: 400 ± 60 MPa
- Hardness: 5400 ± 400

Indications:

- Single crown
- Inlays, Onlays
- Veneers
- ≤ 3 units bridge

Fixed restorations



E.max

Material/Technology: Lichtenstein - Ivoclar

Technical Parameters (raw materials)

-Strength :530MPA

Indications:

- Single crown
- Inlays, onlays
- Veneer, ultra-thin veneer
- Restoration over implant



Porcelain Fused to Precious Metal

Material/Technology: L:Argen, USA

Indications:

Cosmetic treatment of anterior teeth and restoration, such as discolored teeth, tetracycline teeth, malformed teeth and residual roots and crowns after root extraction.



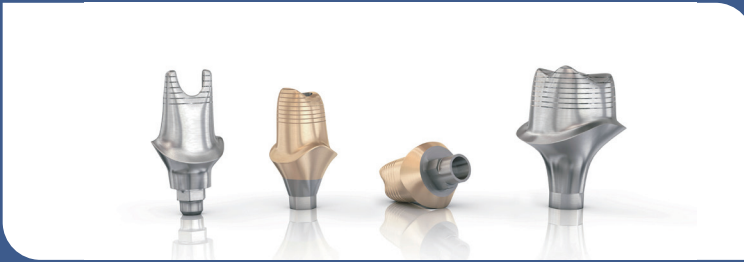
Porcelain Fused to Non-precious Metal

Material/Technology: L:Argen, USA

Indications

- A single tooth is missing
- Multiple teeth are missing
- Tooth defects
- Metal coping

Implant restoration



Custom abutment & Screws

Source of material

-Titanium

Advantages

- Customized angulation - fixed implant position and angle of deviation;
- The preservation and support of soft tissue morphology of personalized emergence shape ---- simplifies complex implant restoration;
- Cement retained for aesthetic consideration

Supported implant systems, including but not limited to:

Astra Tech、Nobel、Straumann、biomet、XIVE, 3、Ankylos、Camlog/Conelog、Bego、AB.Dentium、Frialit、Anthogyr、ICX, MIS、Megagen、Osstem/Hiossen、Zimmer、Thommen(SPI)、Alphatech、NEOBIOTECH、Implant direct、Neodent.

All-on-X Zirconia over ceramic bridge prosthesis



Material

Full Zirconia+ Zirconia bridges

Advantages

- Better than the traditional process, more conducive to ensuring the passive positioning of the support;
- Highly polished zirconia has little wear on the opposing teeth;
- Strong anti-staining ability, will not adhere to tooth stains over time;
- Transparent and natural color, highlighting young appearance;
- No plaque buildup;
- Material characteristics sufficiently reduce the occurrence of complications.



All-on-X Titanium Zirconia over implant prothesis

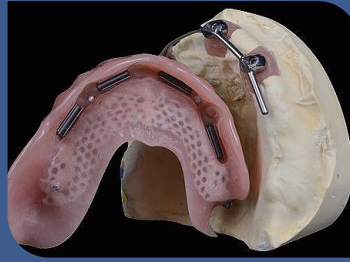


Material

Pure titanium + Full solid zirconia

Advantages

- No pressure on alveolar ridge, reduce secondary absorption;
- Generate occlusal force conduction within the normal occlusal range, which can stimulate the bone around the implant and produce bone perception;
- High precision Swiss imported equipment cutting processing, integrated molding, up to 0.03mm processing accuracy, to ensure that the bridge and the base interface gap connection to achieve accurate positioning;
- Strong, good pressure bearing;
- Rich color form, customized, strong aesthetic advantages;
- No further maintenance required;
- Reduce the difficulty of surgery;
- Support all major implant systems;



Implant Supported bar over denture



Material

Acrylic base + set up premium teeth+ Titanium bar

Advantages

- Fully compatible, flexible and efficient to meet a variety of restoration needs;
- The support can increase the strength of the upper teeth structure, retaining and dispersing the jaw force;
- Easier maintenance and operations;
- Affordable;
- Very low wear on the opposing teeth, good biomechanics.



Removable restorations

PEEK

Product Features

PEEK is a medical-grade polymer that provides an alternative solution to metal implants for patients;

PEEK has stable chemical properties and is safe and reliable, not reaction with other components except concentrated sulfuric acid, therefore the safety and reliability of PEEK materials are trustworthy;

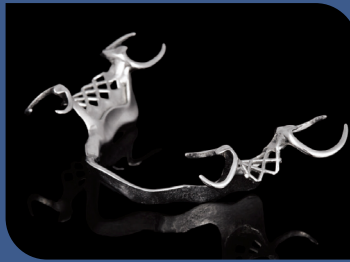
A full range of biocompatibility tests, especially with a cell toxicity level of 0, proves that the restorations made from this material have excellent biocompatibility;

PEEK has a high strength-to-weight ratio and a natural, non-contrasting color, which means it looks more natural in the patient's mouth. This lightweight material is designed and manufactured digitally, improving accuracy and fitness;

PEEK has a long clinical history of verification and has been used in over 4 million orthopedic implants.



Removable restorations



Full denture

Indications:

- Dentition defect



Flipper

Indications:

- Dentition defect

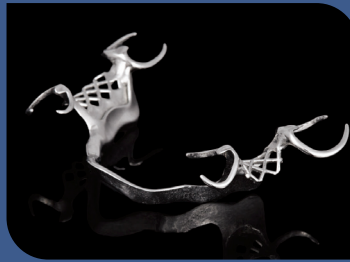


Flexible

Indications:

- Dentition defect

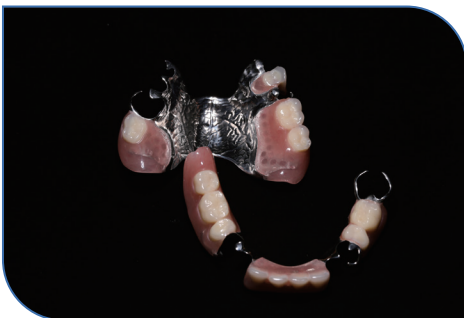
Removable restorations



CoCr SLM 3D printed framework

Indications:

Dentition defect



CNC Titanium framework

Indications:

Dentition defect

Advantages:

- Entire digitalized process, predictable effect, better accuracy, more stable quality;
- Excellent biocompatibility, will not cause part or systemic adverse reactions;
- Titanium itself is light, the foreign body in the mouth is small, and it is more comfortable to wear.

Removable restorations

Vitallium Framework (2000,2000 Plus)

Indication

- Dentition defect

Advantages:

- The main material composition of Vitallium is composed of cobalt, and molybdenum, which can fully improve the strength and corrosion resistance of the stent. Molybdenum can prevent the crystal material from becoming larger when the metal crystallization, so that the tight, thus improving the fatigue resistance;
- Support more esthetic design, lighter, exquisite, and more comfortable to wear;
- Systematic product composition, it is more tightly when patients wear;
- Compared with traditional metal framework, the ductility of the alloy is increased by 2 times, and the folding resistance is stronger, no need to worry about deformation and breaking when wear



Vitallium2000



Vitallium2000+



Removable restorations

Digital denture

Indication

- Dentition defect

Advantages:

Material:

Milling denture(Acrylic) + Milling PMMA teeth

Feature:

Less patient visits; Easy milling; Good abrasive resistance





Orthodontics restorations



Spiral Expander

Function:

Expands the gap between the upper and lower molars in a spiral manner

Remarks:

Expanding range available: 7mm, 9mm, 12mm



Nance + loop

Function:

Maintain molar action, enhance anchorage, and use with fixed orthodontics

Remarks:

Requires a band, buccal tube, tongue side buckle (palatine tube), additional accessories fee may apply



Band & Loop

Function:

Maintenance of unerupted tooth space

Remarks:

Required band, additional accessories fee may apply



NTI Splint

Function:

Protect the teeth during sleep and protect the lower joint

Remarks:

Additional accessories fee may apply



Orthodontics restorations



Connector anti-snore guard

Function:

Protect the teeth during sleep and protect the lower joint

Remarks:

Plastic connector bar accessories fee may apply



Shark fin anti-snore guard

Function:

It helps patient open the upper breathing smoothly without snoring

Remarks:

Screws fee may apply



Orthodontics restorations



Hawley retainer

Function:

Maintenance after orthodontic treatment

Remarks:

Color, glitter, name, picture can be added to the resin, and additional accessories fee may apply



Invisible retainer

Function:

Maintenance after orthodontic treatment

Remarks:

Avoid drinking hot water or biting hard while wearing the retainer



Solder retainer

Function:

Maintenance after orthodontic treatment

Remarks:

Color, glitter, name, picture can be added to the resin, and additional accessories fee may apply



Modified retainer

Function:

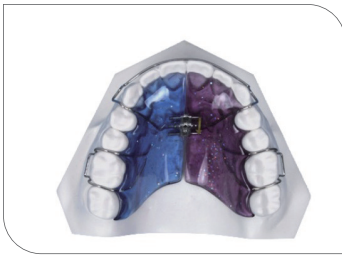
Maintenance after orthodontic treatment

Remarks:

Color, glitter, name, picture can be added to the resin, and additional accessories fee may apply



Orthodontics restorations



Fan Type Expansion

Function:

Transverse arch expansion, suitable for patients with small arch cheeks

Remarks:

The maximum expansion range of screws is optional (7.5mm、11mm)



Frankel

Function:

To reconstruct occlusal relationship, suitable for the treatment of misfit occlusion relationships



Soft Night Guard

Function:

Avoid grind teeth during sleep.



Splint

Function:

Prevent the grinding teeth and protect lower joint.



Orthodontics restorations



Hard/soft Night Guard

Function:

Protect the teeth during sleep and protect the lower joint.



Sports mouth guard

Customized mouth guard

Multiple scenarios (Basketball, soccer, boxing, Taekwondo)

Suitable for: children, teenagers, professional athletes